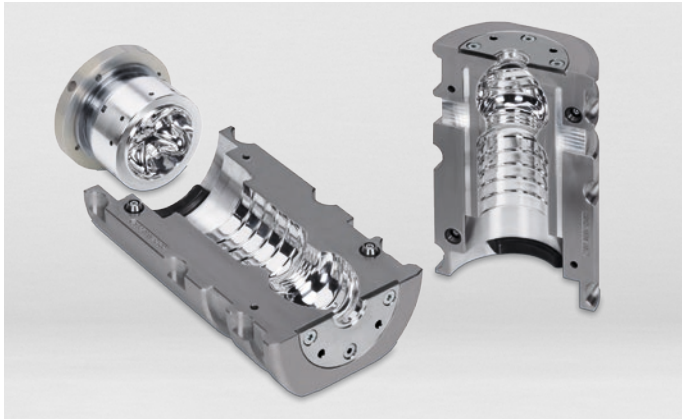
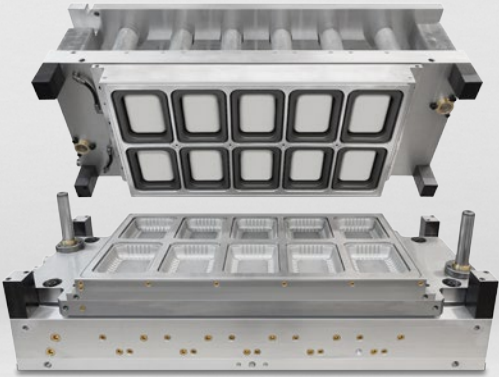


Packaging technology
is our passion





We are at your service

Customer focus is a priority objective for KIEFER. In a cooperation based on partnership, we bring our 30 years of know-how into the customer's ideas.

Our reliability and innovative strength make us a leading partner for the plastics processing industry. We understand the more and more complex requirements of the tools in the fields of medical and food packaging products.

As an independent tool and mold maker, we have the necessary specialist knowledge of manufacturer-specific machine technologies.

KIEFER continuously invests in research and development, in state-of-the-art production technology, and above all in the training and further education of its employees.

Constantly rising raw material and energy prices require new economical concepts. Sustainability and an ever smaller carbon footprint also play an important role in the development of thermoforming tools.

Thanks to new technologies, for example through control units in and at the tool, which continuously monitor the production process, as well as further developed components and simplified construction, technologically advanced and economical solutions are realized.

It all starts with an idea



We design customer specific and flexible ideas for your products. Our team of specialists is there for you right from the beginning, because our service starts with the consultation.

From getting the ideas to the final product, teams of specialists work hand in hand with every client. By this way innovative and individual solutions are found for packaging problems – crossing the fields of thermoforming, injection molding and PET blow molds.

Even after the delivery of the tools we support you with our after sales service and technical services.

KIEFER has three manufacturing divisions

Thermoforming



PET blow molding



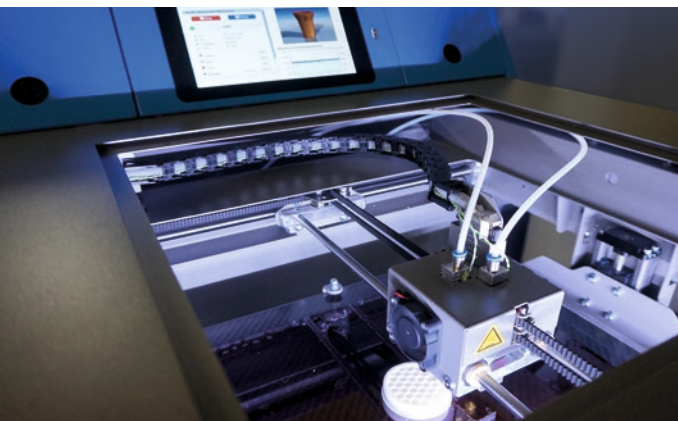
Injection molding



Design, tool development, prototyping and sample production



CAD-construction



3D printing

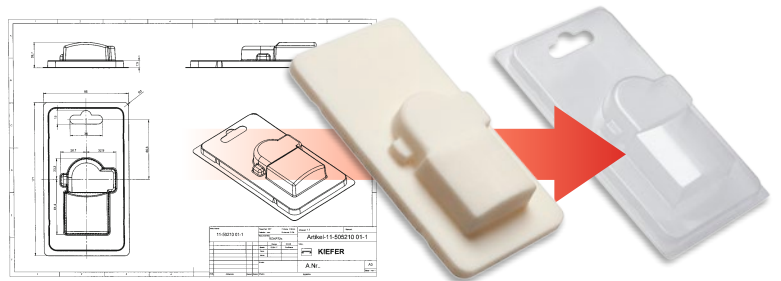


Tool testing / zero series

Product development

By creating design proposals, sketches and sample solutions for your project, we are involved from the beginning.

The photorealistic visualization, CAD / CAM design proposals and models as well as mold inserts / models from the 3-D printer give our customers a realistic impression of the finished product.



Customized mold development

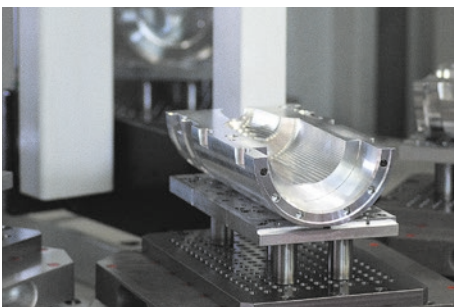
The specialists of KIEFER optimize the design for the perfect shape of the series mold, suitable for the respective production machine, under the following aspects:

- used material,
- material and pressure distribution in the molded part,
- stacking height,
- minimal material consumption,
- high stand by times and power output,
- flexibility through quick-change devices.

Innovation through research and development is the guiding principle at KIEFER.



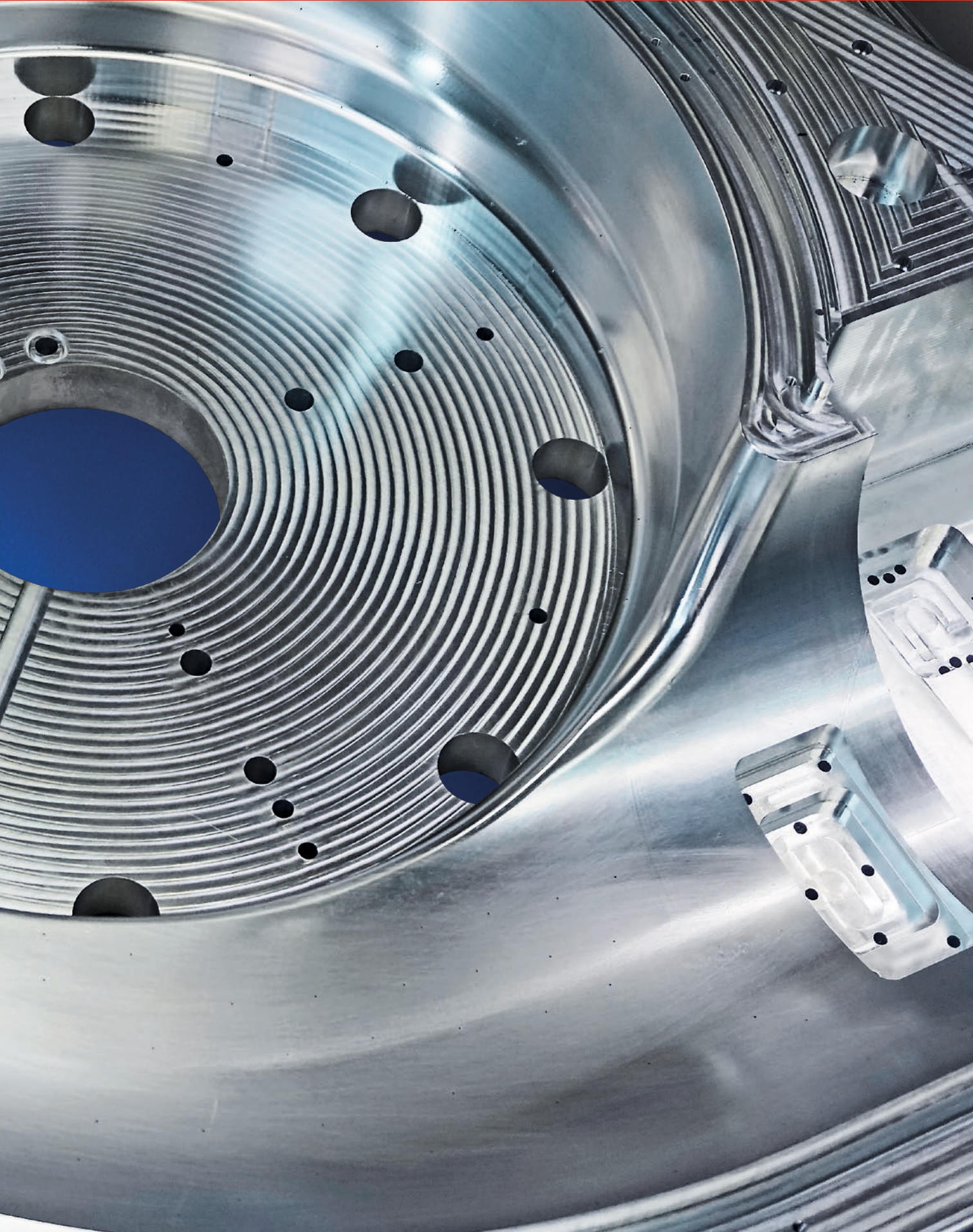
Tool and mold manufacturing



The core competence of the company is toolmaking. The latest, state-of-the-art machining centers for the production of high-quality tools are available here.

- Huge manufacturing capability by modern machines.
- Short processing times thanks to system design, even for individual tools.
- Highest precision thanks to modern quality management.
- Manufacturing of tools for almost all thermoforming machines.
- Synergy effects through cross-functional work and thus optimization of the production processes.
- Fast communication through our own design and development department.

Thermoform molds



Thermoform basic tools as well as special application-linked mold sets for almost all common thermoforming machines.

- Foil and thin gauge tools.
- Plate and heavy gauge tools.
- Vacuum tools.
- Prototypes, serial tools, complete sets of formats, steel rule dies, match metal dies, stacking units.
- Standard parts for thermoforming, e.g. stacking flaps, holding bolts and marking inserts.
- Punching dies and match metal dies for plastic processing.
- Short delivery times can be realized by prefabricated components.
- We develop customer-specific solutions for faster, more efficient work.
- Very good value for money.



■ **Plug assist technology:**

from the design, to the ready machined plug, KIEFER offers all current available plug assist materials, as raw material as well as finished plugs, for all areas of thermoforming.



Steel rule dies



Bowl mold



Lid mold

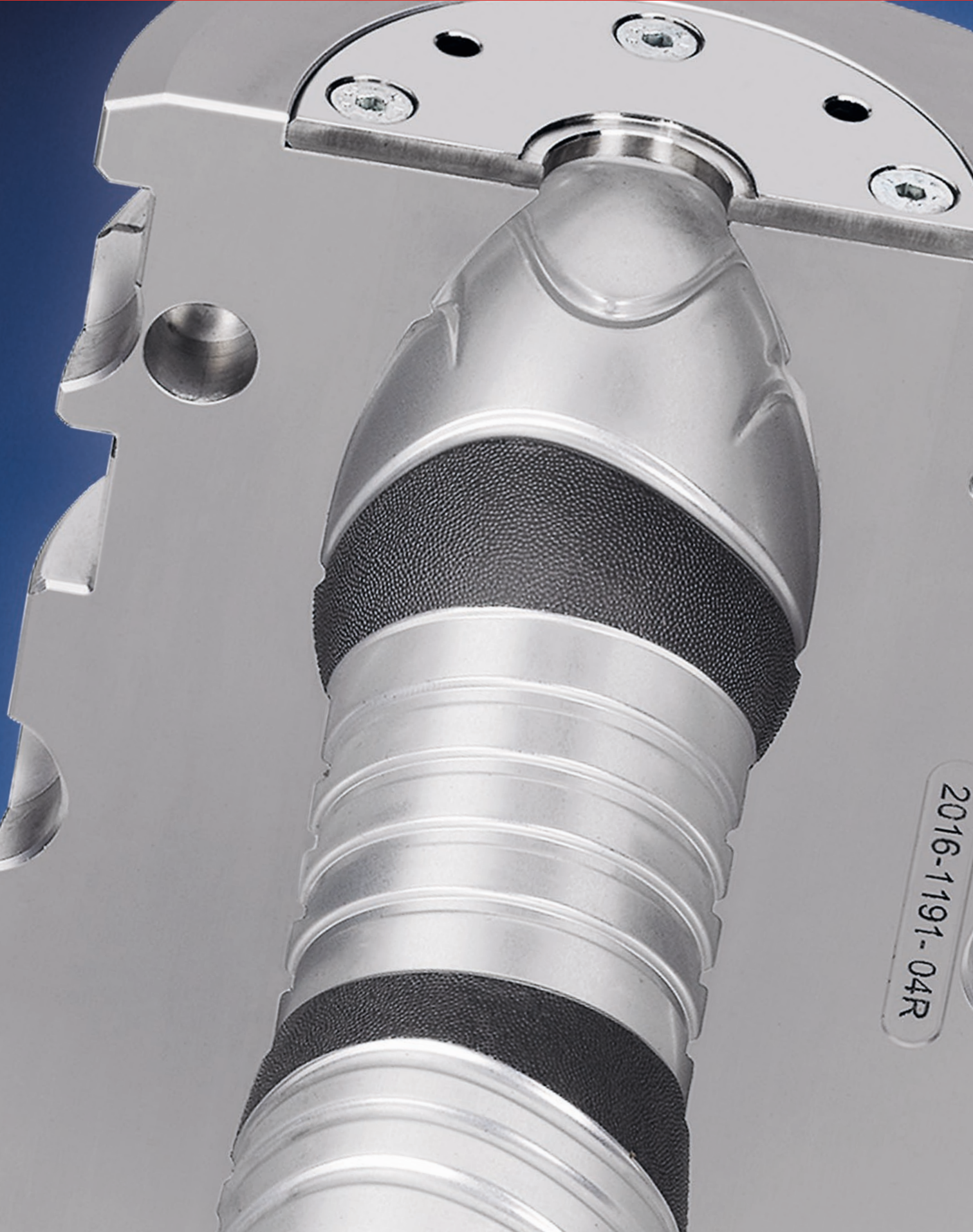


Cup mold



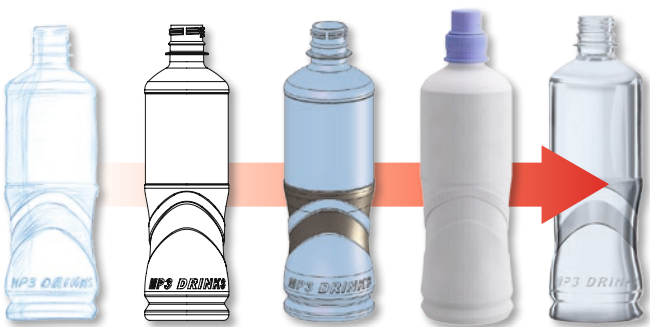
Match metal dies

Blow molds

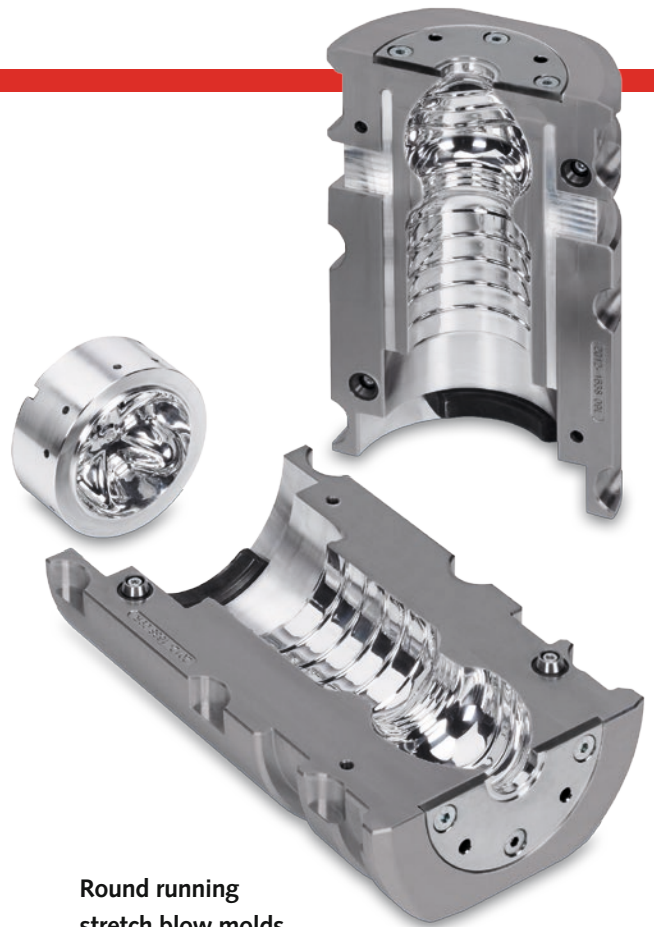


Stretch blow molds – Blow molds for the manufacturing of packaging for the beverage industry, household chemicals and cosmetics.

- Complete design, process development and mold-manufacturing.
- Entire support from the first idea to manufacturing.
- Sample tools and sample parts.
- Molds made of aluminium and stainless steel, surfaces are high polished or coated.
- Manufacturing with the latest high-speed milling and eroding machines.



From the idea to the perfect bottle



Round running stretch blow molds

Molds made of aluminium, surfaces highly polished or anodized, made as round inserts, suitable for **KRONES, SIDEL, KHS-SIG, SIPA, SACMI, SMI**

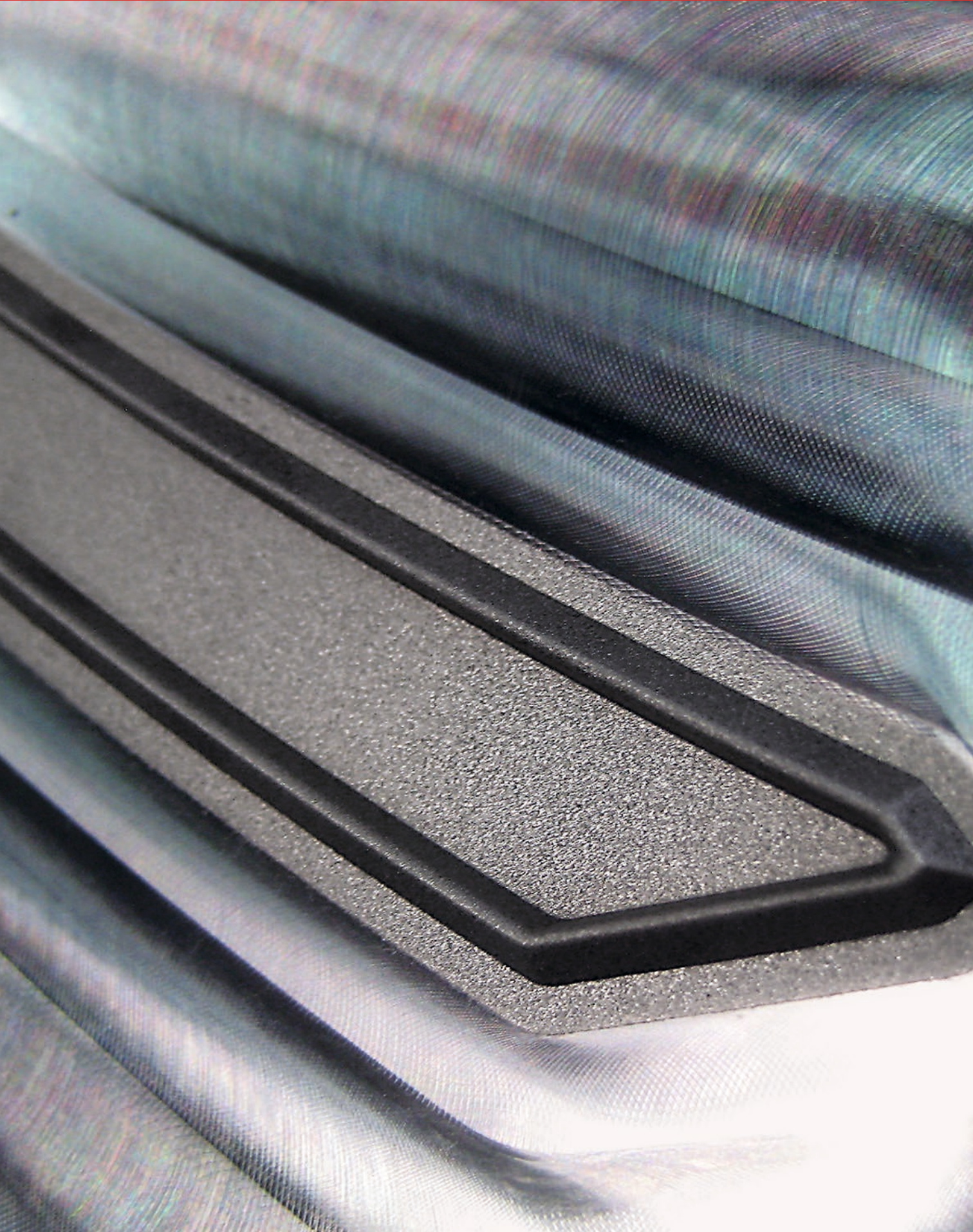


Linear stretch blow molds

Molds made of aluminium, surfaces highly polished or anodized, suitable for **KOSME, SIDE, ADS, SIPA, MAG, BEKUM, TETRA PAK**

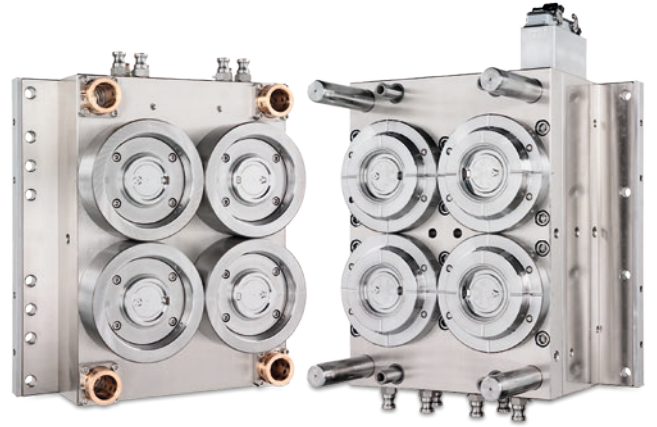


Injection molds





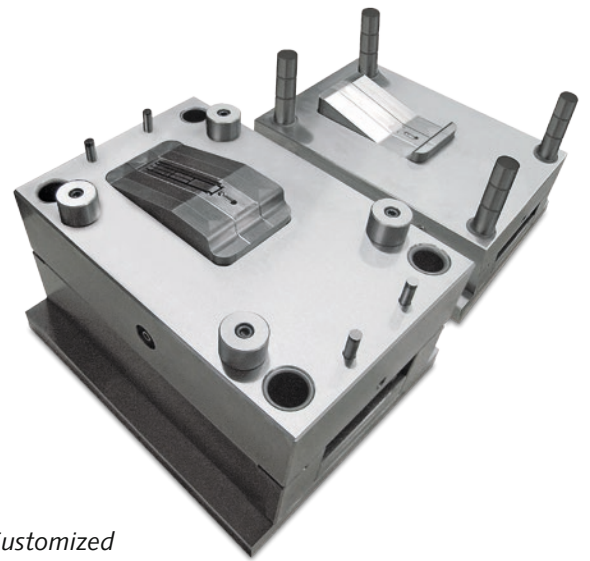
Lid mold, square



Lid mold, round

Decades of experience, both in the fields of food packaging and in technical parts, are used to produce injection molds according to the special requirements of our customers.

- Prototype tools and serial tools, special mold inserts.
- State-of-the-art manufacturing technologies, craftsmanship and many years of experience in the field of plastic processing lead to innovative, economical solutions.
- Shorter delivery times can be realized through component manufacturing.
- Thanks to many years of know-how and excellent machine equipment specialization in the field of special processing according to customers requirements.



Customized Injection Molds



Preform inserts, spare parts



Mold frame

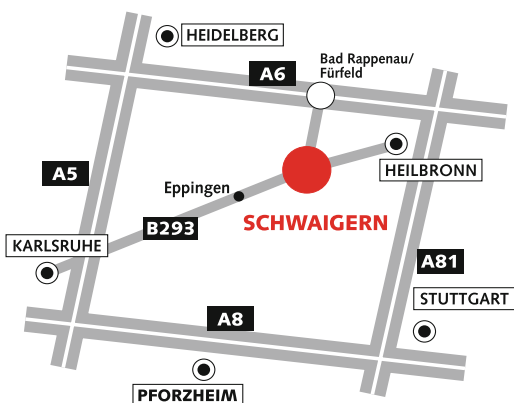


Injection Mold, round

Perfect service worldwide



- Tool commissioning by our service technicians on-site.
- Maintenance and repair work.
- Spare parts service.
- Prototyping and sampling.
- Customized service.
- After sales service.



 **KIEFER**
mold technologies

Kiefer Werkzeugbau GmbH
Steinhäldenstraße 11
74193 Schwaigern, Germany
Tel. +49-(0)7138-9732-0
Fax +49-(0)7138-9732-90
Mail info@kiefer-mold.de
Net www.kiefer-mold.de