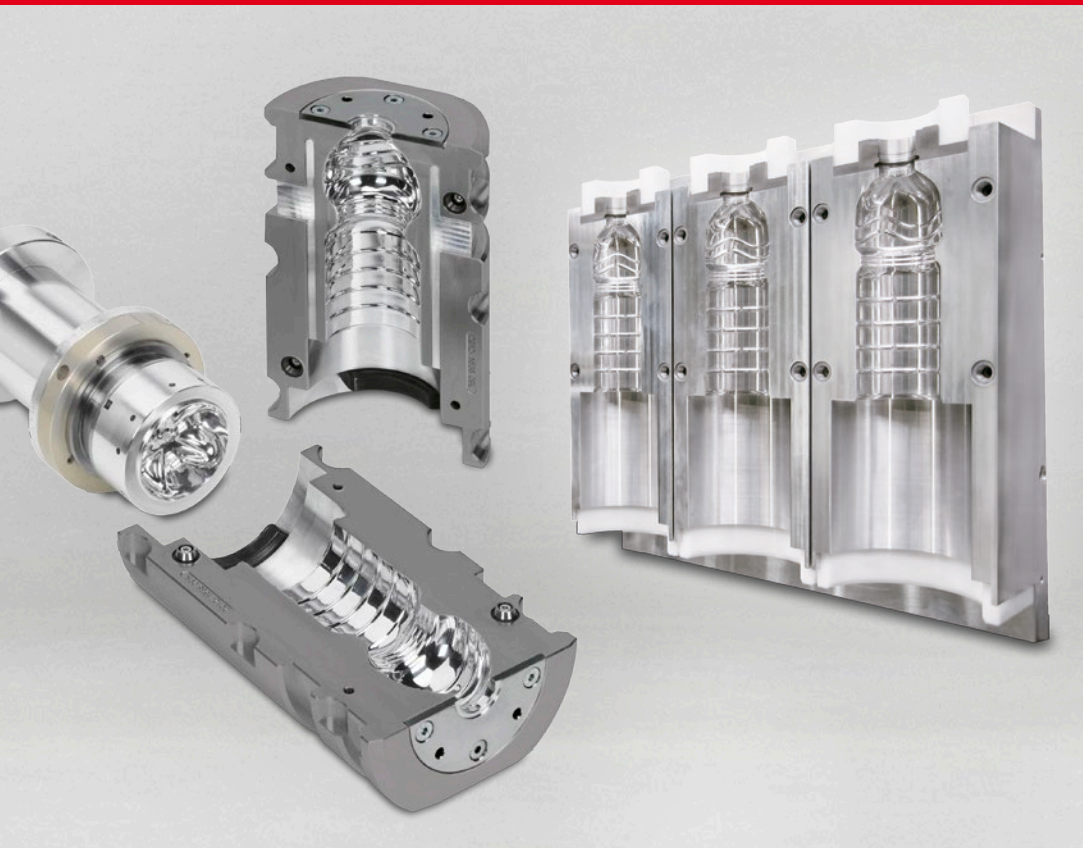


Quality PET blow molds
made in Germany

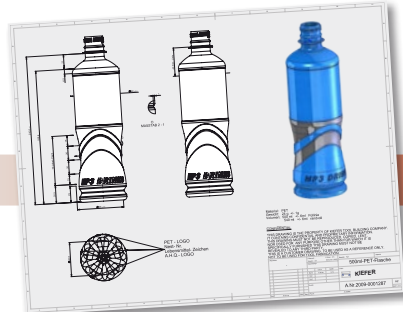


From the first idea to the perfect bottle

The way from the
Design Sketch up
to the finished
sample bottle



idea/sketch



technical drawing



mock-up bottle



STL model

Innovative bottle design and perfect blow molds for an economic bottle production

An attractive and special design according to your corporate identity is basis for the success of your product.

From the creative development and design process to pilot molds, draft and sample bottles made of acrylic glass and the sampling of the tools in our technology center, KIEFER is working on a partnership basis with the customers together - always on the search according to the best individual solutions under consideration of economic factors in bottle production.

PET Blow molds for production of packages/containers in the fields of

- beverage industry (still and mineral water, high and low carbonated drinks, beer, soft-drinks, juice, ...)
- dairy products
- foods (honey, oil, vinegar, ...)
- household chemistry
- cosmetic industry
- petrochemical industry
- ... and much more

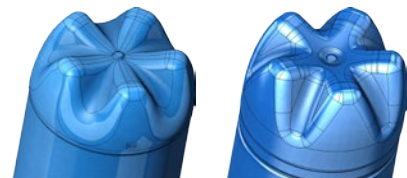
Saves energy and weight:

Light-weight and low-pressure base design

Innovative flooring in light-weight and low-pressure base design with the petaloid-base and the flat-base lead to high energy savings by reduction of the blow pressure.

The specifications of light-weight and low-pressure base designs are available for all common blowing machines. At the same time, a high stability of the bottle at the lowest weight will be achieved

Petaloid-Base



Flat-Base



Bottom mold
for 30l bottle



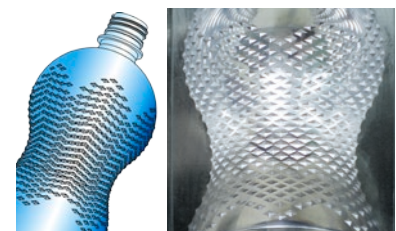
Design variety of surfaces



Leaf Structure
(photochemically etched)



Hexagon structure
(milled)



Diamond pattern structure
(eroded / lasered)

Suitable for your machine type

KIEFER mold technologies has been a partner for over 30 years as a specialist in the field of mold construction for plastic-packaging.

Most modern CAD / CAM systems and state-of-the-art processing centers are used to implement innovative and customer-specific solutions.

Through system construction, short throughput times are achieved, also with individual tools.

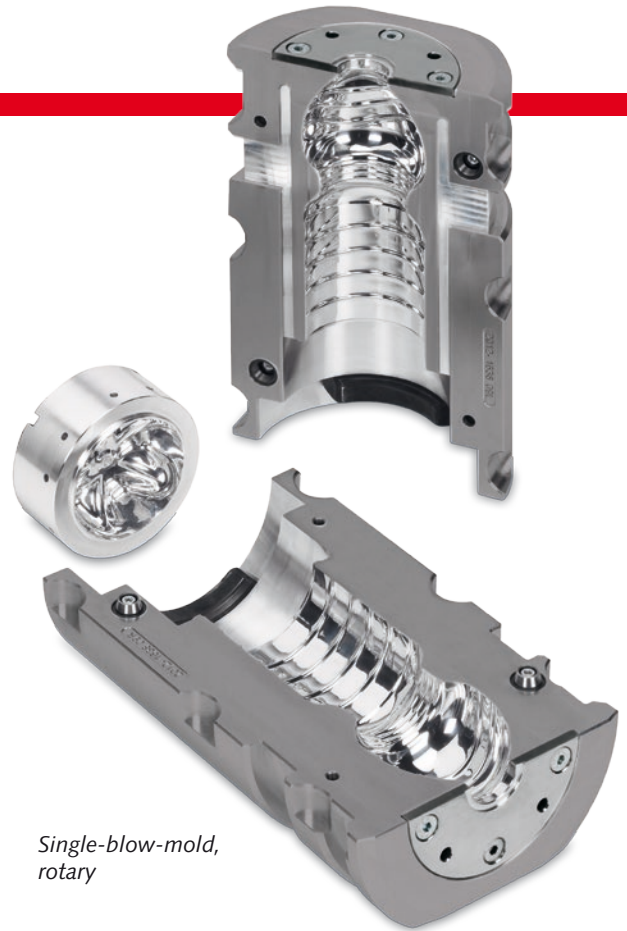
As an independent toolmaking company KIEFER manufactures molds for all types of machines

Rotary blow molds

Molds made of aluminium, surfaces highly polished or anodized, made as round inserts, suitable for **KRONES, SIDEL, KHS-SIG, SIPA, SACMI, SMI**

Linear blow molds

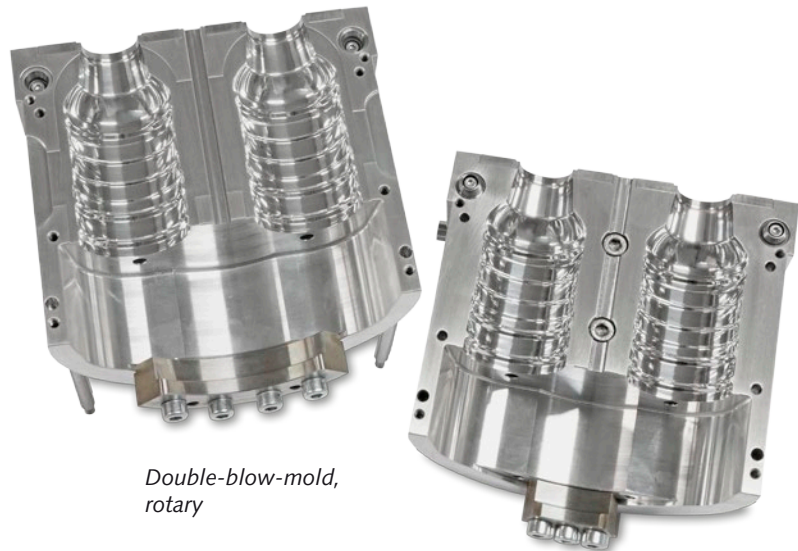
Molds made of aluminium, surfaces highly polished or anodized, suitable for **KOSME, SIDE, ADS, SIPA, MAG, BEKUM, TETRA PAK**



Single-blow-mold, rotary



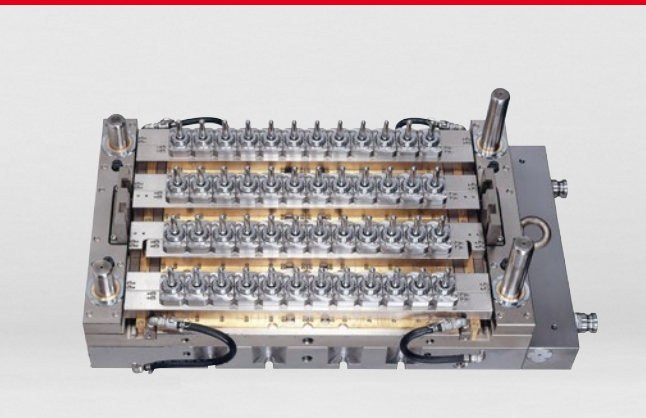
Multi-blow-mold, linear design



Double-blow-mold, rotary



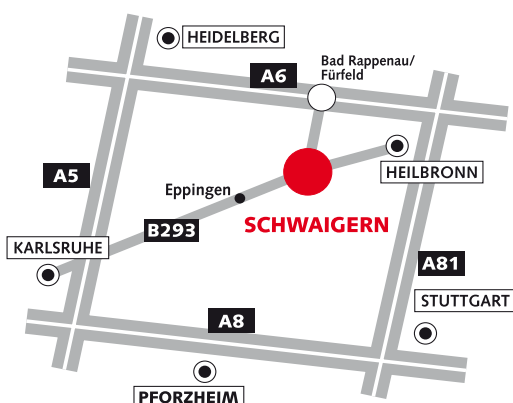
Preforms, caps, service, maintenance and spare parts



Preform tools

KIEFER mold technologies, the competitive partner

- innovative design (light-weight and low-pressure base design)
- transformation from glass to PET
- big container design – up to 18.9l
- preform technology
- one-stage-production
- tools for caps and closures
- prototyping, test runs and qualification in our own test center
- spare parts and quick-change systems
- mold commissioning by our service technicians on-site
- aftersales service



KIEFER
mold technologies

Kiefer Werkzeugbau GmbH
Steinhäldenstraße 11
74193 Schwaigern, Germany
Tel. +49-(0)7138-9732-0
Fax +49-(0)7138-9732-90
Mail info@kiefer-mold.de
Net www.kiefer-mold.de